

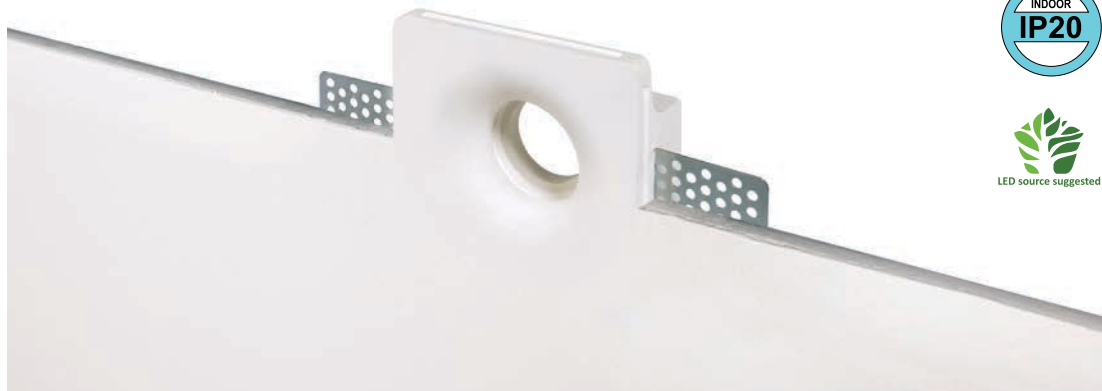
QUALIKO

PROFESSIONAL LIGHT COMPONENTS

2022



Incassi Gypsolyte • Gypsolyte fixtures



| Type | Part n° | Dimensions mm | Standard | Colour |  mm | Packing box dimensions (mm) | Packing box (kg) |
|----------|---------------------|---------------|----------|--------|--|-----------------------------|------------------|
| LOOP Q1B | B9287G035Q1B | 80x80x32h | MR8 | White | 83x83 | 157x130x110 | 0,25 |

Vedere pagina 168 per i kit che includono la lampadina LED - See page 168 for kits including LED lamp

Incasso in Gypsolyte per controsoffitti (per moduli LED)

- Incasso invisibile per controsoffitti
- Dopo aver rasato a gesso il controsoffitto, l'incasso risulta parte integrante del soffitto stesso e può essere tinteggiato
- Apertura per installazione 83x83 mm.
- Adatto a moduli LED standard MR8 (con adattatore **BAT30X23500B**)

Gypsolyte fitting for counter ceiling (for LED modules)

- Invisible fitting for counter ceilings
- Once the counter ceiling is finished with smoothing plaster, the fitting is almost invisible and can be painted together with the ceiling
- Installation hole mm 83x83
- Suitable for standard MR8 LED modules (with adapter **BAT30X23500B**)

Einbaustrahler aus Gypsolyte für Unterdecken (für Led-Modulen geeignet)

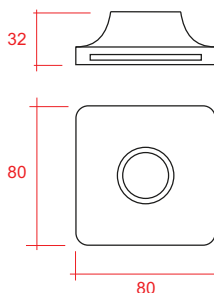
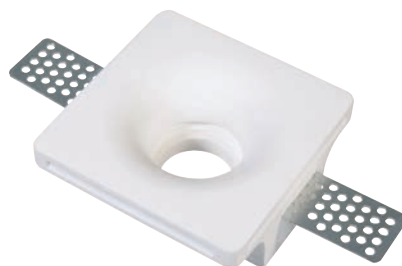
- Unsichtbare Einbaustrahler für Unterdecken
- Sobald die Unterdecke durch Gips glatt gemacht ist, wird der Einbaustrahler fast unsichtbar und kann zusammen mit der Unterdecke gemalt werden
- Montageöffnung 83x83 mm.
- Für Standard MR8 LED-Module geeignet (mit Adaptator **BAT30X23500B**)

Encastrable en Gypsolyte pour plafond (pour modules à LED)

- Encastrable invisible pour faux plafond
- Après avoir lissé le faux-plafond, le boîtier encastrable devient partie intégrante du faux-plafond lui même et peut être peint
- Ouverture dans le plafond pour l'installation: 83x83 mm.
- Adapté aux modules LED MR8 standard (avec adaptateur **BAT30X23500B**)

Cazoleta para falso techo (para módulos de LED) in Gypsolyte

- Cazoleta para falso techo Gypsolyte (para módulos de LED)
- Cazoleta invisible para falsos techos
- Una vez terminado el falso techo con yeso la carcasa es casi invisible y puede ser pintado junto con el techo
- Medidas del orificio para la instalación 83x83 mm.
- Apropriado para módulos estándar de LED MR8 (con adaptador **BAT30X23500B**)



Optional Kit:
Driver 350mA + adapter + 3W LED Module 370+390 Lm

